



SIMONA® PP-H AlphaPlus®

PN 10 直管 & 配件對接



台灣總公司：台中市西屯區福中八街 26 號 2F
台中倉庫：台中市大雅區橫山里永和路 109-9 號
新竹分公司/倉庫：新竹縣竹東鎮二重里光明路 665 號
台南分公司/倉庫：台南市新市區三舍里 19-25 號
e-mail：supertung@supertung.com.tw

TEL: 04-23583066 FAX: 04-23583077
TEL: 04-25663606 FAX: 04-25681778
TEL: 03-5837580-1 FAX: 03-5837582
TEL: 06-5897188-9 FAX: 06-5897218
網址：www.supertung.com.tw

My list of favourites

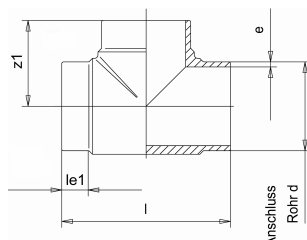
Your personal list of favourites (pinboard) contains the following products:



Pressure pipes

| Material | SDR | d (mm) | e (mm) | Weight (kg/m) | Length (m) | Product no. | Quantity |
|----------|-----|-----------|-----------|------------------|---------------|-------------|----------|
| PP-H | 11 | 10 | 1.8 | 0.046 | 5 | 010000716 | |
| PP-H | 11 | 12 | 1.8 | 0.057 | 5 | 010000717 | |
| PP-H | 11 | 16 | 1.8 | 0.080 | 5 | 010013652 | |
| PP-H | 11 | 20 | 1.9 | 0.107 | 5 | 010000720 | |
| PP-H | 11 | 25 | 2.3 | 0.164 | 5 | 010000722 | |
| PP-H | 11 | 32 | 2.9 | 0.260 | 5 | 010000724 | |
| PP-H | 11 | 40 | 3.7 | 0.412 | 5 | 010000726 | |
| PP-H | 11 | 50 | 4.6 | 0.638 | 5 | 010000730 | |
| PP-H | 11 | 63 | 5.8 | 1.010 | 5 | 010000733 | |
| PP-H | 11 | 75 | 6.8 | 1.400 | 5 | 010000736 | |
| PP-H | 11 | 90 | 8.2 | 2.030 | 5 | 010000740 | |
| PP-H | 11 | 110 | 10.0 | 3.010 | 5 | 010000745 | |
| PP-H | 11 | 125 | 11.4 | 3.910 | 5 | 010000749 | |
| PP-H | 11 | 140 | 12.7 | 4.870 | 5 | 010000752 | |
| PP-H | 11 | 160 | 14.6 | 6.390 | 5 | 010000757 | |
| PP-H | 11 | 180 | 16.4 | 8.070 | 5 | 010000760 | |
| PP-H | 11 | 200 | 18.2 | 9.950 | 5 | 010000765 | |
| PP-H | 11 | 225 | 20.5 | 12.600 | 5 | 010000768 | |
| PP-H | 11 | 250 | 22.7 | 15.500 | 5 | 010000772 | |
| PP-H | 11 | 280 | 25.4 | 19.400 | 5 | 010000775 | |
| PP-H | 11 | 315 | 28.6 | 24.600 | 5 | 010000780 | |
| PP-H | 11 | 355 | 32.2 | 31.200 | 5 | 010000784 | |
| PP-H | 11 | 400 | 36.3 | 39.600 | 5 | 010000789 | |
| PP-H | 11 | 450 | 40.9 | 50.100 | 5 | 010003083 | |
| PP-H | 11 | 500 | 45.4 | 61.800 | 5 | 010000796 | |

PP Tees, injected



Product details:

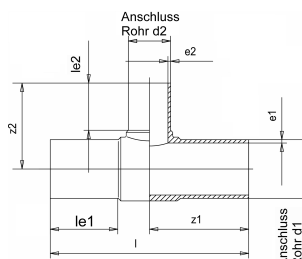
- grey - RAL 7032
- injected, for butt welding
- more designs, see page 63
- DIN EN ISO 15494/C

Product image for illustration purposes only.

| SDR | d (mm) | e (mm) | le1 (mm) | z1 (mm) | Length (mm) | Material | kg/piece | Art. No. |
|-----|-----------|-----------|-------------|------------|----------------|----------|----------|-----------|
| 11 | 20 | 1.9 | 11 | 38 | 79 | PP-H | 0.021 | 010300193 |
| 11 | 25 | 2.3 | 11 | 42 | 84 | PP-H | 0.030 | 010300194 |
| 11 | 32 | 2.9 | 11 | 44 | 88 | PP-H | 0.044 | 010300195 |
| 11 | 40 | 3.7 | 11 | 46 | 92 | PP-H | 0.065 | 010300196 |
| 11 | 50 | 4.6 | 12 | 50 | 100 | PP-H | 0.111 | 010300198 |
| 11 | 63 | 5.8 | 17 | 67 | 134 | PP-H | 0.235 | 010300200 |
| 11 | 75 | 6.8 | 19 | 75 | 150 | PP-H | 0.360 | 010300202 |
| 11 | 90 | 8.2 | 42 | 103 | 206 | PP-H | 0.680 | 010019349 |
| 11 | 110 | 10.0 | 56 | 127 | 254 | PP-H | 1.230 | 010019351 |
| 11 | 125 | 11.4 | 52 | 125 | 250 | PP-R | 1.600 | 010300158 |
| 11 | 140 | 12.7 | 63 | 159 | 318 | PP-R | 2.480 | 010300161 |
| 11 | 160 | 14.6 | 57 | 160 | 320 | PP-H | 3.250 | 010022957 |
| 11 | 180 | 16.4 | 94 | 215 | 430 | PP-R | 5.475 | 010300166 |
| 11 | 200 | 18.2 | 90 | 220 | 440 | PP-R | 6.810 | 010300169 |
| 11 | 225 | 20.5 | 76 | 225 | 450 | PP-H | 8.840 | 010025633 |
| 11 | 250 | 22.7 | 68 | 227 | 454 | PP-R | 10.400 | 010300175 |
| 11 | 280 | 25.4 | 87 | 267 | 534 | PP-R | 15.170 | 010300178 |
| 11 | 315 | 28.6 | 86 | 283 | 566 | PP-R | 20.330 | 010300181 |
| 11 | 355 | 32.2 | 103 | 349 | 698 | PP-R | 30.200 | 010300183 |
| 11 | 400 | 36.3 | 105 | 360 | 720 | PP-R | 39.100 | 010300185 |
| 11 | 450 | 40.9 | 137 | 419 | 838 | PP-R | 61.129 | 010300954 |
| 11 | 500 | 45.4 | 160 | 465 | 930 | PP-R | 84.230 | 010300956 |

All information provided in respect of technical data shall be considered non-binding. This information does not constitute a guarantee of specific properties or qualities and shall not be construed as a warranty in regard to product condition, durability or service life. Subject to modifications and errors. Our standard terms and conditions apply. For further information, please contact our applications engineering team: pipingsystems@simona.de.

PP Tees with reduced branch, injected



Product details:

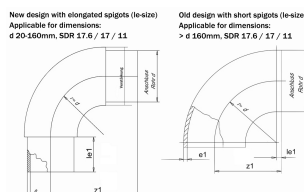
- grey - RAL 7032
- injected, with elongated spigot, for butt welding, IR- and electrofusion welding
- Based on DIN EN ISO 15494/C

Product image for illustration purposes only.

| SDR | d1 (mm) | d2 (mm) | e (mm) | e2 (mm) | le1 (mm) | le2 (mm) | z1 (mm) | z2 (mm) | Length (mm) | kg/piece | Art. No. |
|-----|------------|------------|-----------|------------|-------------|-------------|------------|------------|----------------|----------|-----------|
| 11 | 63 | 50 | 5.8 | 4.6 | 63 | 56 | 108 | 103 | 215 | 0.300 | 013500143 |
| 11 | 75 | 50 | 6.8 | 4.6 | 70 | 56 | 127 | 113 | 253 | 0.540 | 013500331 |
| 11 | 75 | 63 | 6.8 | 5.8 | 70 | 63 | 128 | 117 | 255 | 0.560 | 013500144 |
| 11 | 90 | 63 | 8.2 | 5.8 | 82 | 66 | 141 | 127 | 282 | 0.790 | 013500578 |
| 11 | 90 | 75 | 8.2 | 6.8 | 73 | 68 | 136 | 138 | 280 | 0.800 | 013500145 |
| 11 | 110 | 63 | 10.0 | 5.8 | 88 | 68 | 164 | 149 | 328 | 1.345 | 013500332 |
| 11 | 110 | 75 | 10.0 | 6.8 | 86 | 70 | 159 | 151 | 320 | 1.250 | 013500146 |
| 11 | 110 | 90 | 10.0 | 8.2 | 86 | 79 | 159 | 158 | 320 | 1.440 | 013500333 |
| 11 | 125 | 90 | 11.4 | 8.2 | | | | 170 | 340 | 1.660 | 022300039 |
| 11 | 125 | 110 | 11.4 | 10 | 90 | 83 | 171 | 170 | 341 | 1.860 | 013500334 |
| 11 | 160 | 63 | 14.6 | 5.8 | 105 | 65 | 208 | 170 | 416 | 3.440 | 013500147 |
| 11 | 160 | 75 | 14.6 | 6.8 | 98 | 74 | 172 | 180 | 343 | 2.560 | 013500335 |
| 11 | 160 | 90 | 14.6 | 8.2 | 104 | 83 | 206 | 190 | 412 | 3.685 | 013500579 |
| 11 | 160 | 110 | 14.6 | 10 | 104 | 89 | 207 | 200 | 414 | 3.685 | 013500580 |
| 11 | 180 | 90 | 16.4 | 8.2 | | | | 200 | 427 | 4.360 | 022300036 |
| 11 | 180 | 110 | 16.4 | 10 | | | | 225 | 464 | 4.640 | 022300041 |
| 11 | 200 | 63 | 18.2 | 5.8 | 122 | 63 | 250 | 190 | 500 | 5.700 | 022300161 |
| 11 | 200 | 90 | 18.2 | 5.1 | 122 | 79 | 250 | 207 | 498 | 6.550 | 022300162 |
| 11 | 200 | 110 | 18.2 | 6.3 | 122 | 82 | 250 | 215 | 500 | 7.040 | 022300163 |
| 11 | 200 | 160 | 18.2 | 9.1 | 122 | 98 | 250 | 234 | 500 | 8.300 | 013500337 |
| 11 | 225 | 75 | 20.5 | 6.8 | 120 | 70 | 276 | 227 | 555 | 6.400 | 013500338 |
| 11 | 225 | 90 | 20.5 | 8.2 | 129 | 82 | 278 | 228 | 556 | 9.380 | 013500148 |
| 11 | 225 | 110 | 20.5 | 10 | 130 | 86 | 278 | 238 | 556 | 6.600 | 013500581 |
| 11 | 225 | 160 | 20.5 | 14.6 | 130 | 109 | 280 | 258 | 560 | 10.000 | 013500582 |
| 11 | 225 | 180 | 20.5 | 16.4 | 120 | 105 | 276 | 280 | 560 | 10.450 | 013500339 |
| 11 | 315 | 110 | 28.6 | 10 | 150 | 82 | 346 | 277 | 695 | 15.280 | 022300166 |
| 11 | 315 | 160 | 28.6 | 14.6 | 150 | 102 | 346 | 290 | 695 | 16.600 | 022300167 |
| 11 | 315 | 225 | 28.6 | 20.5 | | | | 335 | 650 | 24.820 | 022300043 |
| 11 | 315 | 250 | 28.6 | 22.7 | 150 | 130 | 346 | 325 | 695 | 21.000 | 022300168 |

All information provided in respect of technical data shall be considered non-binding. This information does not constitute a guarantee of specific properties or qualities and shall not be construed as a warranty in regard to product condition, durability or service life. Subject to modifications and errors. Our standard terms and conditions apply. For further information, please contact our applications engineering team: pipingsystems@simona.de.

PP Bends 90° With short spigots



Product details:

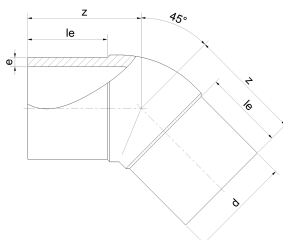
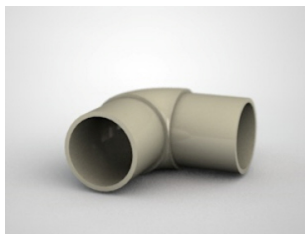
- grey - RAL 7032
- injected (r ~ d), for butt welding
- DIN EN ISO 15494/C

Product image for illustration purposes only.

| SDR | d (mm) | e (mm) | le1 (mm) | z1 (mm) | Angle (°) | Material | kg/piece | Art. No. |
|-----|-----------|-----------|-------------|------------|--------------|----------|----------|-----------|
| 11 | 20 | 1.9 | 18 | 38 | 90 | PP-H | 0.009 | 010100426 |
| 11 | 25 | 2.3 | 18 | 43 | 90 | PP-H | 0.015 | 010100427 |
| 11 | 32 | 2.9 | 22 | 54 | 90 | PP-H | 0.030 | 010100428 |
| 11 | 40 | 3.7 | 22 | 62 | 90 | PP-H | 0.053 | 010100429 |
| 11 | 50 | 4.6 | 22 | 72 | 90 | PP-H | 0.093 | 010100431 |
| 11 | 63 | 5.8 | 22 | 86 | 90 | PP-H | 0.191 | 010100433 |
| 11 | 75 | 6.8 | 22 | 98 | 90 | PP-H | 0.295 | 010100435 |
| 11 | 90 | 8.2 | 25 | 115 | 90 | PP-H | 0.493 | 010100437 |
| 11 | 110 | 10.0 | 28 | 138 | 90 | PP-H | 0.895 | 010100440 |
| 11 | 125 | 11.4 | 32 | 157 | 90 | PP-H | 0.820 | 010100442 |
| 11 | 140 | 12.7 | 35 | 175 | 90 | PP-H | 1.725 | 010100444 |
| 11 | 160 | 14.6 | 40 | 200 | 90 | PP-H | 1.765 | 010100447 |
| 11 | 180 | 16.4 | 45 | 225 | 90 | PP-H | 2.410 | 010100449 |
| 11 | 200 | 18.2 | 19 | 206 | 90 | PP-H | 3.440 | 010100452 |
| 11 | 225 | 20.5 | 21 | 236 | 90 | PP-H | 4.844 | 010100454 |
| 11 | 250 | 22.7 | 20 | 256 | 90 | PP-R | 6.250 | 010100386 |
| 11 | 280 | 25.4 | 24 | 290 | 90 | PP-R | 8.840 | 010100389 |
| 11 | 315 | 28.6 | 22 | 324 | 90 | PP-R | 12.620 | 010100392 |
| 11 | 355 | 32.2 | 38 | 385 | 90 | PP-R | 19.365 | 010100395 |
| 11 | 400 | 36.3 | 41 | 438 | 90 | PP-R | 28.650 | 010100398 |
| 11 | 450 | 40.9 | 60 | 510 | 90 | PP-R | 52.551 | 010026776 |
| 11 | 500 | 45.4 | 60 | 560 | 90 | PP-R | 28.650 | 010026778 |

All information provided in respect of technical data shall be considered non-binding. This information does not constitute a guarantee of specific properties or qualities and shall not be construed as a warranty in regard to product condition, durability or service life. Subject to modifications and errors. Our standard terms and conditions apply. For further information, please contact our applications engineering team: pipingsystems@simona.de.

PP Elbows 45°, injected



Product details:

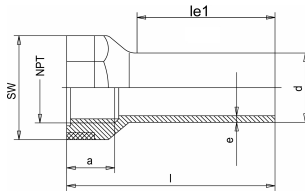
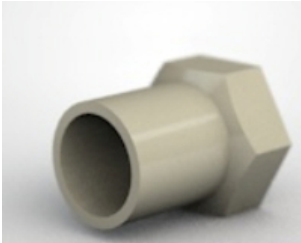
- grey - RAL 7032
- injected, with elongated spigot, for butt welding, IR- and electrofusion welding
- SDR 17.6 on request
- Based on DIN EN ISO 15494/C

Product image for illustration purposes only.

| SDR | d (mm) | e (mm) | le1 (mm) | z1 (mm) | PN (bar) | Angle (°) | Material | kg/piece | Art. No. |
|-----|-----------|-----------|-------------|------------|-------------|--------------|----------|----------|-----------|
| 11 | 20 | 1.9 | 52 | 72 | 10 | 45 | PP-H | 0.019 | 019200083 |
| 11 | 25 | 2.3 | 57 | 76 | 10 | 45 | PP-H | 0.030 | 019200084 |
| 11 | 32 | 2.9 | 71 | 90 | 10 | 45 | PP-H | 0.056 | 019200085 |
| 11 | 40 | 3.7 | 73 | 95 | 10 | 45 | PP-H | 0.088 | 019200086 |
| 11 | 50 | 4.6 | 62 | 76 | 10 | 45 | PP-H | 0.108 | 019200087 |
| 11 | 63 | 5.8 | 66 | 88 | 10 | 45 | PP-H | 0.203 | 019200089 |
| 11 | 75 | 6.8 | 71 | 90 | 10 | 45 | PP-H | 0.290 | 019200090 |
| 11 | 90 | 8.2 | 83 | 105 | 10 | 45 | PP-H | 0.460 | 019200092 |
| 11 | 110 | 10.0 | 93 | 121 | 10 | 45 | PP-H | 0.785 | 019200094 |
| 11 | 125 | 11.4 | 98 | 137 | 10 | 45 | PP-H | 1.130 | 019200095 |
| 11 | 140 | 12.7 | 122 | 168 | 10 | 45 | PP-H | 1.685 | 019200385 |
| 11 | 160 | 14.6 | 143 | 190 | 10 | 45 | PP-H | 2.530 | 019200097 |
| 11 | 180 | 16.4 | 141 | 196 | 10 | 45 | PP-H | 3.340 | 019200149 |
| 11 | 200 | 18.2 | 153 | 207 | 10 | 45 | PP-H | 4.540 | 019200151 |
| 11 | 225 | 20.5 | 153 | 210 | 10 | 45 | PP-H | 5.750 | 019200098 |
| 11 | 250 | 22.7 | 134 | 220 | 10 | 45 | PP-R | 7.875 | 019200296 |
| 11 | 280 | 25.4 | 143 | 227 | 10 | 45 | PP-R | 10.060 | 019200298 |
| 11 | 315 | 28.6 | 155 | 250 | 10 | 45 | PP-R | 13.675 | 019200300 |

All information provided in respect of technical data shall be considered non-binding. This information does not constitute a guarantee of specific properties or qualities and shall not be construed as a warranty in regard to product condition, durability or service life. Subject to modifications and errors. Our standard terms and conditions apply. For further information, please contact our applications engineering team: pipingsystems@simona.de.

PP Adaptors with threaded female end



Product image for illustration purposes only.

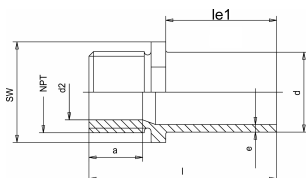
Product details:

- grey - RAL 7032
- injected, with elongated spigot, for butt welding, IR- and electrofusion welding
- with cylindric threaded female end Rp (acc. to DIN EN 10226/1), with conical threaded female end NPT, with reinforcement-ring made of galvanised steel, max. admissible operating overpressure for water at +20 °C 8 bar, double-layer PTFE tape recommended as sealant
- DIN EN ISO 15494/C

| SDR | d (mm) | e (mm) | le1 (mm) | RP (") | PN (bar) | a (mm) | SW (mm) | Gewinde | Length (mm) | kg/piece | Art. No. |
|-----|--------|--------|----------|--------|----------|--------|---------|------------------|-------------|----------|-----------|
| 11 | 20 | 1.9 | 39 | 1/2 | 8 | 16 | 30 | Female thread Rp | 58 | 0.016 | 018800001 |
| 11 | 20 | 1.9 | 41 | | 8 | 16 | 30 | NPT | 58 | 0.016 | 018800007 |
| 11 | 25 | 2.3 | 41 | 3/4 | 8 | 18 | 36 | Female thread Rp | 63 | 0.021 | 018800002 |
| 11 | 25 | 2.3 | 41 | | 8 | 18 | 36 | NPT | 63 | 0.022 | 018800008 |
| 11 | 32 | 2.9 | 44 | 1 | 8 | 21 | 46 | Female thread Rp | 71 | 0.040 | 018800003 |
| 11 | 32 | 2.9 | 44 | | 8 | 21 | 46 | NPT | 71 | 0.040 | 018800009 |
| 11 | 40 | 3.7 | 49 | 1 1/4 | 8 | 23 | 55 | Female thread Rp | 79 | 0.058 | 018800004 |
| 11 | 40 | 3.7 | 49 | | 8 | 23 | 55 | NPT | 79 | 0.058 | 018800010 |
| 11 | 50 | 4.6 | 55 | 1 1/2 | 8 | 24 | 62 | Female thread Rp | 84 | 0.080 | 018800005 |
| 11 | 50 | 4.6 | 55 | | 8 | 24 | 62 | NPT | 84 | 0.079 | 018800011 |
| 11 | 63 | 5.8 | 63 | 2 | 8 | 29 | 75 | Female thread Rp | 97 | 0.140 | 018800006 |
| 11 | 63 | 5.8 | 63 | | 8 | 29 | 75 | NPT | 97 | 0.149 | 018800012 |

All information provided in respect of technical data shall be considered non-binding. This information does not constitute a guarantee of specific properties or qualities and shall not be construed as a warranty in regard to product condition, durability or service life. Subject to modifications and errors. Our standard terms and conditions apply. For further information, please contact our applications engineering team: pipingsystems@simona.de.

PP Adaptors with threaded male end



Product image for illustration purposes only.

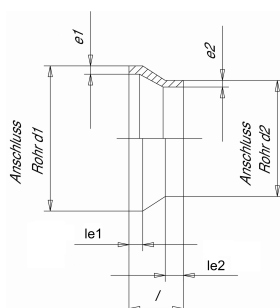
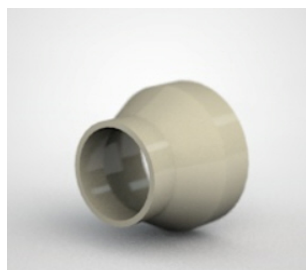
Product details:

- grey - RAL 7032
- injected, with elongated spigot, for butt welding, IR- and electrofusion welding
- with conical threaded male end R (acc. to DIN EN 10226/1), with conical threaded male end NPT, max. admissible operating overpressure for water at +20 °C 8 bar, double-layer PTFE tape recommended as sealant
- DIN EN ISO 15494/C

| SDR | d (mm) | e (mm) | le1 (mm) | PN (bar) | a (mm) | SW (mm) | Gewinde | Length (mm) | kg/piece | Art. No. |
|-----|--------|--------|----------|----------|--------|---------|-----------------|-------------|----------|-----------|
| 11 | 20 | 1.9 | 41 | 8 | 14 | 24 | Male thread NPT | 58 | 0.008 | 018900007 |
| 11 | 25 | 2.3 | 41 | 8 | 14 | 27 | Male thread NPT | 61 | 0.015 | 018900008 |
| 11 | 32 | 2.9 | 44 | 8 | 18 | 36 | Male thread NPT | 69 | 0.021 | 018900009 |
| 11 | 40 | 3.7 | 49 | 8 | 19 | 46 | Male thread NPT | 75 | 0.041 | 018900010 |
| 11 | 50 | 4.6 | 55 | 8 | 20 | 55 | Male thread NPT | 82 | 0.059 | 018900011 |
| 11 | 63 | 5.8 | 63 | 8 | 21 | 55 | Male thread NPT | 91 | 0.096 | 018900012 |

All information provided in respect of technical data shall be considered non-binding. This information does not constitute a guarantee of specific properties or qualities and shall not be construed as a warranty in regard to product condition, durability or service life. Subject to modifications and errors. Our standard terms and conditions apply. For further information, please contact our applications engineering team: pipingsystems@simona.de.

PP Reducers concentric, injected



Product details:

- grey - RAL 7032
- injected, for butt welding
- DIN EN ISO 15494/C

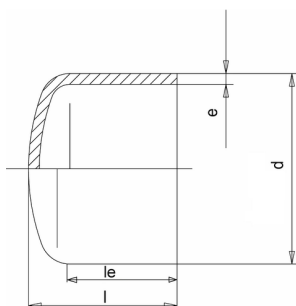
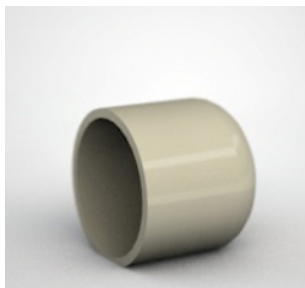
Product image for illustration purposes only.

| SDR | d1 (mm) | d2 (mm) | e (mm) | e2 (mm) | le1 (mm) | le2 (mm) | Length (mm) | Material | kg/piece | Art. No. |
|-----|------------|------------|-----------|------------|-------------|-------------|----------------|----------|----------|-----------|
| 11 | 25 | 20 | 2.3 | 1.9 | 10 | 5 | 25 | PP-H | 0.004 | 014900997 |
| 11 | 32 | 20 | 2.9 | 1.9 | 24 | 24 | 70 | PP-R | 0.013 | 014900998 |
| 11 | 32 | 25 | 2.9 | 2.3 | 25 | 25 | 68 | PP-H | 0.015 | 014900368 |
| 11 | 40 | 20 | 3.7 | 1.9 | | | 48 | PP-H | 0.015 | 014900999 |
| 11 | 40 | 25 | 3.7 | 2.3 | 22 | 22 | 62 | PP-H | 0.021 | 014901000 |
| 11 | 40 | 32 | 3.7 | 2.9 | 25 | 25 | 62 | PP-H | 0.022 | 014901001 |
| 11 | 50 | 25 | 4.6 | 2.3 | 25 | 25 | 85 | PP-H | 0.037 | 014900369 |
| 11 | 50 | 32 | 4.6 | 2.9 | 27 | 27 | 85 | PP-H | 0.043 | 014900370 |
| 11 | 50 | 40 | 4.6 | 3.7 | 30 | 26 | 83 | PP-H | 0.047 | 014900371 |
| 11 | 63 | 32 | 5.8 | 2.9 | 27 | 25 | 89 | PP-H | 0.064 | 014900372 |
| 11 | 63 | 40 | 5.8 | 3.7 | 28 | 27 | 89 | PP-H | 0.070 | 014900373 |
| 11 | 63 | 50 | 5.8 | 4.6 | 25 | 25 | 87 | PP-H | 0.079 | 014900374 |
| 11 | 75 | 32 | 6.8 | 2.9 | 30 | 20 | 70 | PP-R | 0.060 | 014900279 |
| 11 | 75 | 40 | 6.8 | 3.7 | 30 | 23 | 70 | PP-R | 0.070 | 014900280 |
| 11 | 75 | 50 | 6.8 | 4.6 | 30 | 28 | 70 | PP-H | 0.080 | 014900281 |
| 11 | 75 | 63 | 6.8 | 5.8 | 25 | 26 | 89 | PP-H | 0.112 | 014901005 |
| 11 | 90 | 50 | 8.2 | 4.6 | 28 | 25 | 93 | PP-H | 0.145 | 014900375 |
| 11 | 90 | 63 | 8.2 | 5.8 | 28 | 28 | 92 | PP-H | 0.162 | 014900376 |
| 11 | 90 | 75 | 8.2 | 6.8 | 31 | 26 | 90 | PP-H | 0.174 | 014900377 |
| 11 | 110 | 50 | 10.0 | 4.6 | 28 | 20 | 96 | PP-H | 0.205 | 014900378 |
| 11 | 110 | 63 | 10.0 | 5.8 | 41 | 35 | 110 | PP-H | 0.238 | 014900379 |
| 11 | 110 | 75 | 10.0 | 6.8 | 40 | 28 | 96 | PP-H | 0.263 | 014900380 |
| 11 | 110 | 90 | 10.0 | 8.2 | 41 | 40 | 105 | PP-H | 0.280 | 014900381 |
| 11 | 125 | 75 | 11.4 | 6.8 | 32 | 19 | 98 | PP-H | 0.299 | 014900383 |
| 11 | 125 | 90 | 11.4 | 8.2 | 40 | 40 | 110 | PP-H | 0.345 | 014900384 |
| 11 | 125 | 110 | 11.4 | 10 | 40 | 40 | 100 | PP-H | 0.375 | 014900385 |
| 11 | 140 | 75 | 12.7 | 6.8 | 52 | 41 | 135 | PP-H | 0.515 | 014901006 |
| 11 | 140 | 90 | 12.7 | 8.2 | 50 | 40 | 130 | PP-H | 0.530 | 014901007 |
| 11 | 140 | 110 | 12.7 | 10 | 50 | 40 | 120 | PP-H | 0.540 | 014901008 |
| 11 | 140 | 125 | 12.7 | 11.4 | 53 | 41 | 120 | PP-H | 0.600 | 014901009 |
| 11 | 160 | 90 | 14.6 | 8.2 | 48 | 34 | 141 | PP-H | 0.695 | 014900386 |
| 11 | 160 | 110 | 14.6 | 10 | 40 | 34 | 129 | PP-H | 0.685 | 014900387 |
| 11 | 160 | 125 | 14.6 | 11.4 | 40 | 32 | 122 | PP-H | 0.725 | 014900388 |
| 11 | 160 | 140 | 14.6 | 12.7 | 49 | 38 | 125 | PP-H | 0.725 | 014900389 |
| 11 | 180 | 90 | 16.4 | 8.2 | 50 | 40 | 145 | PP-H | 0.800 | 014901010 |
| 11 | 180 | 110 | 16.4 | 10 | 50 | 40 | 150 | PP-H | 1.010 | 014901011 |
| 11 | 180 | 125 | 16.4 | 11.4 | 52 | 40 | 145 | PP-H | 0.985 | 014901012 |
| 11 | 180 | 140 | 16.4 | 12.7 | 51 | 47 | 135 | PP-H | 0.995 | 014901013 |
| 11 | 180 | 160 | 16.4 | 14.6 | 55 | 52 | 135 | PP-H | 1.020 | 014900306 |
| 11 | 200 | 140 | 18.2 | 12.7 | 63 | 43 | 148 | PP-H | 1.240 | 014901015 |
| 11 | 200 | 160 | 18.2 | 14.6 | 63 | 50 | 145 | PP-H | 1.290 | 014900390 |
| 11 | 200 | 180 | 18.2 | 16.4 | 50 | 45 | 145 | PP-H | 1.300 | 014901016 |
| 11 | 225 | 140 | 20.5 | 12.7 | 61 | 48 | 157 | PP-H | 1.575 | 014900391 |
| 11 | 225 | 160 | 20.5 | 14.6 | 65 | 54 | 161 | PP-H | 1.655 | 014900392 |
| 11 | 225 | 180 | 20.5 | 16.4 | 60 | 58 | 163 | PP-H | 1.770 | 014900393 |
| 11 | 225 | 200 | 20.5 | 18.2 | 63 | 53 | 145 | PP-R | 1.920 | 014900313 |
| 11 | 250 | 160 | 22.7 | 14.6 | 63 | 53 | 170 | PP-R | 2.155 | 014900314 |
| 11 | 250 | 180 | 22.7 | 16.4 | 64 | 58 | 175 | PP-R | 2.325 | 014900315 |
| 11 | 250 | 200 | 22.7 | 18.2 | 64 | 64 | 180 | PP-R | 2.500 | 014900316 |
| 11 | 250 | 225 | 22.7 | 20.5 | 75 | 83 | 180 | PP-R | 2.750 | 014900317 |
| 11 | 280 | 200 | 25.4 | 18.2 | 75 | 54 | 214 | PP-R | 3.450 | 014900318 |
| 11 | 280 | 225 | 25.4 | 20.5 | 72 | 57 | 203 | PP-R | 3.425 | 014900319 |
| 11 | 280 | 250 | 25.4 | 22.7 | 72 | 62 | 202 | PP-R | 1.980 | 014900320 |
| 11 | 315 | 200 | 28.6 | 18.2 | 80 | 50 | 230 | PP-R | 4.520 | 014900321 |

| SDR | d1 (mm) | d2 (mm) | e (mm) | e2 (mm) | le1 (mm) | le2 (mm) | Length (mm) | Material | kg/piece | Art. No. |
|------------|-------------------|-------------------|------------------|-------------------|--------------------|--------------------|-----------------------|-----------------|-----------------|-----------------|
| 11 | 315 | 225 | 28.6 | 20.5 | 84 | 60 | 237 | PP-R | 5.110 | 014900322 |
| 11 | 315 | 250 | 28.6 | 22.7 | 86 | 63 | 231 | PP-R | 5.105 | 014900323 |
| 11 | 315 | 280 | 28.6 | 25.4 | 80 | 70 | 222 | PP-R | 5.195 | 014900324 |

All information provided in respect of technical data shall be considered non-binding. This information does not constitute a guarantee of specific properties or qualities and shall not be construed as a warranty in regard to product condition, durability or service life. Subject to modifications and errors. Our standard terms and conditions apply. For further information, please contact our applications engineering team: pipingsystems@simona.de.

PP End caps



Product details:

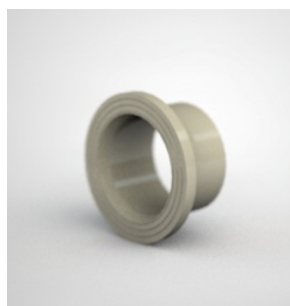
- grey - RAL 7032
- injected, with elongated spigot, for butt welding, IR- and electrofusion welding
- Executions > d 225 mm on page 41
- Based on DIN EN ISO 15494/C

Product image for illustration purposes only.

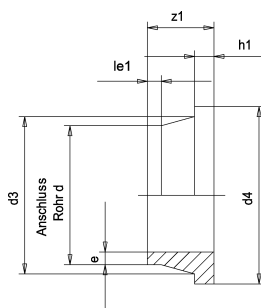
| SDR | d (mm) | e (mm) | le1 (mm) | PN (bar) | Length (mm) | kg/piece | Art. No. |
|-----|-----------|-----------|-------------|-------------|----------------|----------|-----------|
| 11 | 20 | 1.9 | 42 | 10 | 49 | 0.005 | 019600135 |
| 11 | 25 | 2.3 | 42 | 10 | 52 | 0.006 | 019600113 |
| 11 | 32 | 2.9 | 47 | 10 | 57 | 0.016 | 013900093 |
| 11 | 40 | 3.7 | 51 | 10 | 64 | 0.023 | 019600034 |
| 11 | 50 | 4.6 | 59 | 10 | 72 | 0.048 | 019600030 |
| 11 | 63 | 5.8 | 67 | 10 | 86 | 0.087 | 019600037 |
| 11 | 75 | 6.8 | 73 | 10 | 94 | 0.138 | 019600031 |
| 11 | 90 | 8.2 | 83 | 10 | 112 | 0.222 | 019600039 |
| 11 | 110 | 10.0 | 90 | 10 | 124 | 0.375 | 019600032 |
| 11 | 125 | 11.4 | 94 | 10 | 130 | 0.520 | 019600041 |
| 11 | 140 | 12.7 | 99 | 10 | 142 | 0.695 | 019600043 |
| 11 | 160 | 14.6 | 109 | 10 | 162 | 1.040 | 019600051 |
| 11 | 180 | 16.4 | 113 | 10 | 170 | 1.375 | 019600045 |
| 11 | 200 | 18.2 | 117 | 10 | 180 | 1.860 | 019600026 |
| 11 | 225 | 20.5 | 129 | 10 | 205 | 2.625 | 019600048 |

All information provided in respect of technical data shall be considered non-binding. This information does not constitute a guarantee of specific properties or qualities and shall not be construed as a warranty in regard to product condition, durability or service life. Subject to modifications and errors. Our standard terms and conditions apply. For further information, please contact our applications engineering team: pipingsystems@simona.de.

PP Stub flanges for loose flange ISO/DIN, injected



Product image for illustration purposes only.



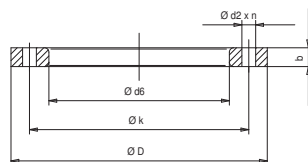
Product details:

- grey - RAL 7032
- injected, for butt welding
- DIN EN ISO 15494/C

| SDR | d (mm) | e (mm) | d3 (mm) | d4 (mm) | le1 (mm) | z1 (mm) | h1 (mm) | PN (bar) | Material | kg/piece | Art. No. |
|-----|-----------|-----------|------------|------------|-------------|------------|------------|-------------|----------|----------|-----------|
| 11 | 20 | 1.9 | 27 | 46 | 29 | 52 | 8 | 10 | PP-H | 0.018 | 010600222 |
| 11 | 25 | 2.3 | 32 | 59 | 27 | 52 | 10 | 10 | PP-H | 0.033 | 010600223 |
| 11 | 32 | 2.9 | 40 | 68 | 26 | 50 | 10 | 10 | PP-H | 0.044 | 010600224 |
| 11 | 40 | 3.7 | 49 | 78 | 24 | 52 | 11 | 10 | PP-H | 0.065 | 010600225 |
| 11 | 50 | 4.6 | 61 | 89 | 27 | 57 | 12 | 10 | PP-H | 0.085 | 010600226 |
| 11 | 63 | 5.8 | 75 | 102 | 25 | 60 | 14 | 10 | PP-H | 0.140 | 010600227 |
| 11 | 75 | 6.8 | 88 | 123 | 21 | 55 | 16 | 10 | PP-H | 0.200 | 010013629 |
| 11 | 90 | 8.2 | 105 | 138 | 43 | 80 | 17 | 10 | PP-H | 0.315 | 010013630 |
| 11 | 110 | 10.0 | 125 | 158 | 37 | 80 | 18 | 10 | PP-H | 0.440 | 010013613 |
| 11 | 125 | 11.4 | 132 | 158 | 35 | 80 | 25 | 10 | PP-H | 0.540 | 010021383 |
| 11 | 140 | 12.7 | 155 | 188 | 39 | 83 | 25 | 10 | PP-H | 0.715 | 010021386 |
| 11 | 160 | 14.6 | 175 | 212 | 52 | 105 | 25 | 10 | PP-H | 1.120 | 010021389 |
| 11 | 180 | 16.4 | 186 | 212 | 65 | 127 | 30 | 10 | PP-H | 0.920 | 010021391 |
| 11 | 200 | 18.2 | 232 | 268 | 50 | 123 | 32 | 10 | PP-H | 2.160 | 010021394 |
| 11 | 225 | 20.5 | 235 | 268 | 65 | 127 | 32 | 10 | PP-H | 2.165 | 010021397 |

All information provided in respect of technical data shall be considered non-binding. This information does not constitute a guarantee of specific properties or qualities and shall not be construed as a warranty in regard to product condition, durability or service life. Subject to modifications and errors. Our standard terms and conditions apply. For further information, please contact our applications engineering team: pipingsystems@simona.de.

PP/Steel Loose flanges, ISO/DIN drilled



Product image for illustration purposes only.

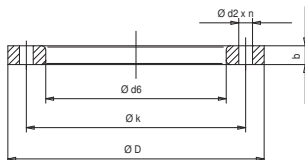
Product details:

- Drilled PN 10/16 up to d 180 mm, > 180 mm drilled PN 10
- DIN EN ISO 15494/C, drilled PN 10/16 acc. to DIN EN 1092/1 (replaces ISO/DIN 2501)

| d (mm) | DN (mm) | Load PN | d2 (mm) | d6 (mm) | D (mm) | b (mm) | k (mm) | Drilled PN | Anzahl n | M | Colour | kg/piece | Art. No. |
|--------|---------|---------|---------|---------|--------|--------|--------|------------|----------|-----|--------|----------|-----------|
| 20 | 15 | 16 | 14 | 27.5 | 95 | 12 | 65 | 10/16 | 4 | M12 | grey | 0.252 | 013000001 |
| 20 | 15 | 16 | 14 | 27.5 | 95 | 12 | 65 | 10/16 | 4 | M12 | black | 0.221 | 013000021 |
| 25 | 20 | 16 | 14 | 34 | 105 | 12 | 75 | 10/16 | 4 | M12 | grey | 0.320 | 013000002 |
| 25 | 20 | 16 | 14 | 34 | 105 | 12 | 75 | 10/16 | 4 | M12 | black | 0.315 | 013000022 |
| 32 | 25 | 16 | 14 | 42 | 115 | 16 | 85 | 10/16 | 4 | M12 | grey | 0.488 | 013000003 |
| 32 | 25 | 16 | 14 | 42 | 115 | 16 | 85 | 10/16 | 4 | M12 | black | 0.457 | 013000023 |
| 40 | 32 | 16 | 18 | 50.5 | 140 | 18 | 100 | 10/16 | 4 | M16 | grey | 0.680 | 013000004 |
| 40 | 32 | 16 | 18 | 50.5 | 140 | 18 | 100 | 10/16 | 4 | M16 | black | 0.686 | 013000024 |
| 50 | 40 | 16 | 18 | 61.5 | 150 | 18 | 110 | 10/16 | 4 | M16 | grey | 0.801 | 013000005 |
| 50 | 40 | 16 | 18 | 61.5 | 150 | 18 | 110 | 10/16 | 4 | M16 | black | 0.800 | 013000025 |
| 63 | 50 | 16 | 18 | 77.5 | 165 | 17 | 125 | 10/16 | 4 | M16 | grey | 0.855 | 013000006 |
| 63 | 50 | 16 | 18 | 77.5 | 165 | 17 | 125 | 10/16 | 4 | M16 | black | 0.906 | 013000026 |
| 75 | 65 | 16 | 18 | 91.5 | 185 | 22 | 145 | 10/16 | 4 | M16 | grey | 1.245 | 013000007 |
| 75 | 65 | 16 | 18 | 91.5 | 185 | 22 | 145 | 10/16 | 4 | M16 | black | 1.262 | 013000027 |
| 90 | 80 | 16 | 18 | 107.5 | 200 | 20 | 160 | 10/16 | 8 | M16 | grey | 1.264 | 013000008 |
| 90 | 80 | 16 | 18 | 108 | 200 | 20 | 160 | 10/16 | 8 | M16 | black | 1.280 | 013000028 |
| 110 | 100 | 16 | 18 | 128 | 223 | 20 | 180 | 10/16 | 8 | M16 | grey | 1.565 | 013000009 |
| 110 | 100 | 16 | 18 | 128 | 223 | 20 | 180 | 10/16 | 8 | M16 | black | 1.595 | 013000029 |
| 125 | 100 | 16 | 18 | 134.5 | 223 | 20 | 180 | 10/16 | 8 | M16 | grey | 1.456 | 013000010 |
| 125 | 100 | 16 | 18 | 134.5 | 223 | 20 | 180 | 10/16 | 8 | M16 | black | 1.490 | 013000030 |
| 140 | 125 | 16 | 18 | 157.5 | 250 | 24 | 210 | 10/16 | 8 | M16 | grey | 2.276 | 013000011 |
| 140 | 125 | 16 | 18 | 157.5 | 250 | 24 | 210 | 10/16 | 8 | M16 | black | 2.320 | 013000031 |
| 160 | 150 | 16 | 22 | 177.5 | 285 | 24 | 240 | 10/16 | 8 | M20 | grey | 3.538 | 013000012 |
| 160 | 150 | 16 | 22 | 177.5 | 285 | 24 | 240 | 10/16 | 8 | M20 | black | 3.463 | 013000032 |
| 180 | 150 | 16 | 22 | 188 | 285 | 24 | 240 | 10/16 | 8 | M20 | grey | 3.144 | 013000013 |
| 180 | 150 | 16 | 22 | 187.5 | 285 | 24 | 240 | 10/16 | 8 | M20 | black | 3.175 | 013000033 |
| 200 | 200 | 10 | 22 | 235.5 | 340 | 24 | 295 | 10 | 8 | M20 | grey | 4.616 | 013000014 |
| 200 | 200 | 10 | 22 | 235.5 | 340 | 24 | 295 | 10 | 8 | M20 | black | 4.633 | 013000034 |
| 225 | 200 | 10 | 22 | 238 | 340 | 24 | 295 | 10 | 8 | M20 | grey | 4.137 | 013000015 |
| 225 | 200 | 10 | 22 | 238 | 340 | 24 | 295 | 10 | 8 | M20 | black | 4.138 | 013000035 |
| 250 | 250 | 10 | 22 | 288 | 403 | 30 | 350 | 10 | 12 | M20 | grey | 7.093 | 013000016 |
| 250 | 250 | 10 | 22 | 287.5 | 403 | 30 | 350 | 10 | 12 | M20 | black | 7.233 | 013000036 |
| 280 | 250 | 10 | 22 | 294 | 405 | 30 | 350 | 10 | 12 | M20 | grey | 7.002 | 013000017 |
| 280 | 250 | 10 | 22 | 294 | 405 | 30 | 350 | 10 | 12 | M20 | black | 7.014 | 013000037 |
| 315 | 300 | 10 | 22 | 337.5 | 462 | 34 | 400 | 10 | 12 | M20 | grey | 9.878 | 013000018 |
| 315 | 300 | 10 | 22 | 337.5 | 460 | 34 | 400 | 10 | 12 | M20 | black | 9.705 | 013000038 |
| 355 | 350 | 10 | 22 | 375.5 | 513 | 39 | 460 | 10 | 16 | M20 | grey | 16.030 | 013000019 |
| 355 | 350 | 10 | 22 | 375.5 | 505 | 39 | 460 | 10 | 16 | M20 | black | 15.075 | 013000039 |
| 400 | 400 | 10 | 26 | 429.5 | 570 | 44 | 515 | 10 | 16 | M24 | grey | 19.760 | 013000020 |
| 400 | 400 | 10 | 26 | 429.5 | 570 | 44 | 515 | 10 | 16 | M24 | black | 19.616 | 013000040 |
| 450 | 500 | 10 | 26 | 516.5 | 670 | 44 | 620 | 10 | 20 | M24 | black | 25.796 | 013000041 |
| 500 | 500 | 10 | 26 | 532.5 | 670 | 44 | 620 | 10 | 20 | M24 | black | 25.550 | 013000042 |

All information provided in respect of technical data shall be considered non-binding. This information does not constitute a guarantee of specific properties or qualities and shall not be construed as a warranty in regard to product condition, durability or service life. Subject to modifications and errors. Our standard terms and conditions apply. For further information, please contact our applications engineering team: pipingsystems@simona.de.

PP/Steel Loose flanges, JIS drilled



Product details:

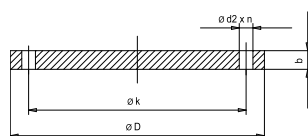
- Drilled for JIS B 2220 - 10 K
- JIS B 2220 - 10 K

Product image for illustration purposes only.

| d (mm) | DN (mm) | d2 (mm) | d6 (mm) | D (mm) | b (mm) | k (mm) | PN (bar) | Anzahl n | Colour | kg/piece | Load K | Art. No. |
|-----------|------------|------------|------------|-----------|-----------|-----------|-------------|----------|--------|----------|--------|-----------|
| 20 | 15 | 15 | 28 | 95 | 12 | 70 | 16 | 4 | grey | 0.225 | 10 | 013000326 |
| 25 | 20 | 15 | 34.5 | 100 | 12 | 75 | 16 | 4 | grey | 0.250 | 10 | 013000327 |
| 32 | 25 | 19 | 42.5 | 125 | 16 | 90 | 16 | 4 | grey | 0.515 | 10 | 013000328 |
| 40 | 32 | 19 | 51 | 135 | 18 | 100 | 16 | 4 | grey | 0.618 | 10 | 013000329 |
| 50 | 40 | 19 | 62 | 140 | 18 | 105 | 16 | 4 | grey | 0.640 | 10 | 013000330 |
| 63 | 50 | 19 | 78 | 155 | 18 | 120 | 16 | 4 | grey | 0.880 | 10 | 013000331 |
| 75 | 65 | 19 | 92 | 175 | 18 | 140 | 16 | 4 | grey | 0.965 | 10 | 013000332 |
| 90 | 80 | 19 | 108 | 185 | 18 | 150 | 16 | 8 | grey | 1.070 | 10 | 013000333 |
| 110 | 100 | 19 | 134 | 210 | 20 | 175 | 16 | 8 | grey | 1.100 | 10 | 013000334 |
| 140 | 125 | 23 | 158 | 250.5 | 24 | 210 | 16 | 8 | grey | 2.225 | 10 | 013000335 |
| 160 | 150 | 22.5 | 178 | 280 | 24 | 240 | 16 | 8 | grey | 3.115 | 10 | 013000336 |
| 225 | 200 | 23 | 240 | 330 | 24 | 290 | 16 | 12 | grey | 3.370 | 10 | 013000337 |

All information provided in respect of technical data shall be considered non-binding. This information does not constitute a guarantee of specific properties or qualities and shall not be construed as a warranty in regard to product condition, durability or service life. Subject to modifications and errors. Our standard terms and conditions apply. For further information, please contact our applications engineering team: pipingsystems@simona.de.

PP/Steel Blind flanges, ISO/DIN drilled



Product details:

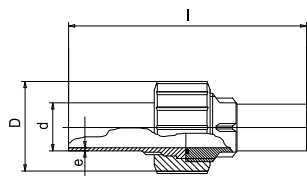
- black, grey on request
- Drilled PN 10/16 up to d 180 mm
- DIN EN ISO 15494/C, drilled PN 10, DIN EN 1092/1 (replaces ISO/DIN 2501)

Product image for illustration purposes only.

| d (mm) | DN (mm) | Load PN | d2 (mm) | D (mm) | b (mm) | k (mm) | Drilled PN | Anzahl n | kg/piece | Art. No. |
|-----------|------------|---------|------------|-----------|-----------|-----------|------------|----------|----------|-----------|
| 20 | 15 | 10 | 14 | 95 | 16 | 65 | 10/16 | 4 | 0.290 | 013100003 |
| 25 | 20 | 10 | 18 | 105 | 12 | 75 | 10/16 | 4 | 0.380 | 013100004 |
| 32 | 25 | 10 | 14 | 115 | 18 | 85 | 10/16 | 4 | 0.596 | 013100005 |
| 40 | 32 | 10 | 18 | 140 | 17 | 100 | 10/16 | 4 | 0.830 | 013100006 |
| 50 | 40 | 10 | 18 | 150 | 18 | 110 | 10/16 | 4 | 1.057 | 013100007 |
| 63 | 50 | 10 | 18 | 165 | 18 | 125 | 10/16 | 4 | 1.303 | 013100008 |
| 75 | 65 | 10 | 18 | 185 | 18 | 145 | 10/16 | 4 | 1.580 | 013100009 |
| 90 | 80 | 10 | 18 | 200 | 20 | 160 | 10/16 | 8 | 2.279 | 013100010 |
| 110 | 100 | 10 | 18 | 220 | 20 | 180 | 10/16 | 8 | 2.813 | 013100011 |
| 125 | 100 | 10 | 18 | 220 | 20 | 180 | 10/16 | 8 | 2.867 | 013100012 |
| 140 | 125 | 10 | 18 | 250 | 24 | 210 | 10/16 | 8 | 3.920 | 013100013 |
| 160 | 150 | 10 | 22 | 285 | 22 | 240 | 10/16 | 8 | 7.085 | 013100014 |
| 180 | 150 | 10 | 22 | 285 | 24 | 240 | 10/16 | 8 | 7.139 | 013100015 |
| 200 | 200 | 10 | 22 | 340 | 24 | 295 | 10 | 8 | 10.550 | 013100016 |
| 225 | 200 | 10 | 22 | 340 | 24 | 295 | 10 | 8 | 10.607 | 013100017 |
| 250 | 250 | 10 | 22 | 395 | 30 | 350 | 10 | 12 | 14.040 | 013100018 |
| 280 | 250 | 10 | 22 | 395 | 30 | 350 | 10 | 12 | 14.040 | 013100019 |
| 315 | 300 | 10 | 22 | 445 | 34 | 400 | 10 | 12 | 26.480 | 013100020 |
| 355 | 350 | 10 | 22 | 505 | 39 | 460 | 10 | 16 | 39.000 | 013100021 |
| 400 | 400 | 10 | 25 | 574 | 46 | 515 | 10 | 16 | 50.400 | 013100022 |

All information provided in respect of technical data shall be considered non-binding. This information does not constitute a guarantee of specific properties or qualities and shall not be construed as a warranty in regard to product condition, durability or service life. Subject to modifications and errors. Our standard terms and conditions apply. For further information, please contact our applications engineering team: pipingsystems@simona.de.

PP Unions, with EPDM seal



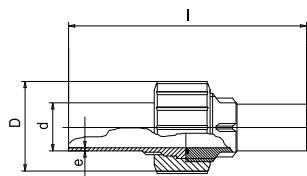
Product details:

- grey - RAL 7032
- injected, for butt-welding, union and union bush with conical thread R (acc. to DIN EN 10226/1)
- max. admissible operating overpressure for water at + 20 °C up to 12 bar
- DIN EN ISO 15494/C

| SDR | d (mm) | e (mm) | R (") | PN (bar) | Length (mm) | kg/piece | Art. No. |
|-----|-----------|-----------|----------|-------------|----------------|----------|-----------|
| 11 | 20 | 1.9 | 1/2 | 12 | 105 | 0.055 | 019500007 |
| 11 | 25 | 2.3 | 3/4 | 12 | 110 | 0.082 | 019500008 |
| 11 | 32 | 2.9 | 1 | 12 | 117 | 0.114 | 019500009 |
| 11 | 40 | 3.7 | 1 1/4 | 12 | 123 | 0.190 | 019500010 |
| 11 | 50 | 4.6 | 1 1/2 | 12 | 129 | 0.260 | 019500011 |
| 11 | 63 | 5.8 | 2 | 12 | 135 | 0.430 | 019500012 |

All information provided in respect of technical data shall be considered non-binding. This information does not constitute a guarantee of specific properties or qualities and shall not be construed as a warranty in regard to product condition, durability or service life. Subject to modifications and errors. Our standard terms and conditions apply. For further information, please contact our applications engineering team: pipingsystems@simona.de.

PP Unions, with FPM seal



Product details:

- grey - RAL 7032
- injected, for butt-welding, union and union bush with conical thread R (acc. to DIN EN 10226/1)
- max. admissible operating overpressure for water at + 20 °C up to 12 bar
- DIN EN ISO 15494/C

| SDR | d (mm) | e (mm) | R (") | PN (bar) | Length (mm) | kg/piece | Art. No. |
|-----|-----------|-----------|----------|-------------|----------------|----------|-----------|
| 11 | 20 | 1.9 | 1/2 | 12 | 105 | 0.056 | 019500013 |
| 11 | 25 | 2.3 | 3/4 | 12 | 110 | 0.085 | 019500014 |
| 11 | 32 | 2.9 | 1 | 12 | 117 | 0.118 | 019500015 |
| 11 | 40 | 3.7 | 1 1/4 | 12 | 123 | 0.190 | 019500016 |
| 11 | 50 | 4.6 | 1 1/2 | 12 | 129 | 0.260 | 019500017 |
| 11 | 63 | 5.8 | 2 | 12 | 135 | 0.460 | 019500018 |

All information provided in respect of technical data shall be considered non-binding. This information does not constitute a guarantee of specific properties or qualities and shall not be construed as a warranty in regard to product condition, durability or service life. Subject to modifications and errors. Our standard terms and conditions apply. For further information, please contact our applications engineering team: pipingsystems@simona.de.

Trade name: **SIMONA® PP-H AlphaPlus®**
 Date of printing: 19.03.2020

Revision: 27.05.2019

| SIMONA® PP-H AlphaPlus® | |
|--|--|
| Data sheet update | 27.05.2019 |
| Moulding compound extruded | PP-H,ECH,16-09-003 |
| Extruded to moulding compound standard | DIN EN ISO 19069-1 |
| Moulding compound pressed | PP-H,QCH,16-09-003 |
| Pressed to moulding compound standard | DIN EN ISO 19069-1 |
| Density, g/cm ³ , DIN EN ISO 1183 | 0.910 |
| Tensile modulus of elasticity, MPa, DIN EN ISO 527 | 1700 |
| Yield stress, MPa, DIN EN ISO 527 | 33 |
| Elongation at yield, % , DIN EN ISO 527 | 8 |
| Impact strength, kJ/m ² , DIN EN ISO 179 | without break |
| Notched impact strength Charpy, kJ/m ² , DIN EN ISO 179-1eA | 9 |
| Shore hardness D (15 s), DIN EN ISO 868 | 72 |
| Mean coefficient of linear thermal expansion, K ⁻¹ , ISO 11359-2 | 1,6 x 10 ⁻⁴ |
| Surface resistivity, Ohm , DIN IEC 60093 | ≥ 10 ¹³ |
| Temperature range, °C | 0 to +100 |
| Fire behaviour DIN 4102 | DIN 4102 B2 normal flammability (self-assessment without test certificate) |
| Food compliance EU 10/2011 | yes |
| Food compliance FDA | yes |

All specifications are deemed to be approximate values in respect of the specific material and may vary depending on the processing methods used. In general, data specified applies to average values measured on extruded sheets with a thickness of 4 mm. In the case of sheets manufactured by means of pressing, testing is generally performed on sheets with a thickness of 20 mm. Deviations from the values specified are possible if the sheets in this thickness are not available. In the case of backed sheets, all technical specifications relate to the non-backed base sheets. Information presented herein is not necessarily applicable to other products (e.g. pipes, solid rods) of the same material or products that have undergone downstream processing. Suitability of materials for a specific field of application must be assessed by the party responsible for processing or the end-user. All technical specifications presented herein are designed merely to provide assistance in terms of project planning. They do not constitute a guarantee of specific properties or qualities. For further information, please contact our Technical Service Centre at tsc@simona.de.

Trade name: **SIMONA® PP-H AlphaPlus®**
 Date of printing: 19.03.2020

Revision: 27.05.2019

| | |
|--|---|
| 1. Identification of substance/preparation and company | Manufacturer details: SIMONA AG Teichweg 16 D-55606 Kirn Phone: +49 (0) 67 52 14-0 Fax: +49 (0) 67 52 14-211 |
| 2. Hazards identification | unknown |
| 3. Composition / Information on ingredients | Chemical characteristics: polymer of propylene CAS number: not applicable |
| 4. First-aid measures | General comment: medical aid is not necessary First-aid measures: none Routes of exposure: none Symptoms /effects: none |
| 5. Firefighting measures | Suitable fire-fighting appliance: water fog, foam, fire fighting powder, carbon dioxide Hazard warning notice: not applicable |
| 6. Accidental release measures | Person-related measures: none Environmental protection measures: not applicable Cleaning equipment: not applicable Unsuitable cleaning products: not applicable |
| 7. Handling and storage | Handling: no special regulations to be observed Storage: storable for an unlimited period |
| 8. Exposure controls / Personal protection | Special design of techn. processing facilities: not required Tolerance levels: none Exposure assessment: none Respiratory protection: not required Eye protection: not required Body protection: not required |
| 9. Physical and chemical properties | <u>Phenotype</u> Physical state: semi-finished product, solid state Colour: grey Odour: not applicable <u>Change of state</u> Crystalline melting range: 160-165 °C Flash point: not applicable <u>Other remarks</u> Density: 0.910 g/cm ³ |

Trade name: **SIMONA® PP-H AlphaPlus®**
Date of printing: 19.03.2020

Revision: 27.05.2019

| | |
|-------------------------------|---|
| 10. Stability and reactivity | Thermal decomposition: above appr. 572°F Hazardous decomposition products: Besides carbon black also carbon dioxide and water as well as low molecular parts of PP will develop during the burning process. In case of incomplete burning also carbon monoxide may arise. Use of stabilisers: none Exothermic reactions: none Notices regarding state of aggregation: none Conditions to be avoided: none Substances/media to be avoided: none |
| 11. Toxicological information | No hazardous effects on health were observed over several years of usage. |
| 12. Ecological information | No biodegradation, no solubility in water, no hazardous effects on the environment are to be expected. Mobility: not applicable Accumulation: not applicable Eco-toxicity: not applicable |
| 13. Disposal considerations | Can be recycled or can be disposed of together with household rubbish (acc. to local regulations). Waste key for the unused product: EAK-Code 120 105 Waste name: waste of polyolefine |
| 14. Transport information | No dangerous product in respect to / according to transport regulations Notice/symbol transport containers: none Special marking for containers: none |
| 15. Regulatory information | Marking according to GefStoffV/EG: no obligation for marking Water danger class: class 0 (self classification) Domestic requirements to be observed: none |
| 16. Other information | This information solely describes the safety requirements of the product(s) and is based on our current state of knowledge. It does not give any assurance concerning the product(s) described within the meaning of statutory warranty regulations. |