



SIMONA® PP-H AlphaPlus®

直管 & 配件 套接



台灣總公司：台中市西屯區福中八街 26 號 2F
台中倉庫：台中市大雅區橫山里永和路 109-9 號
新竹分公司/倉庫：新竹縣竹東鎮二重里光明路 665 號
台南分公司/倉庫：台南市新市區三舍里 19-25 號
e-mail：supertung@supertung.com.tw

TEL: 04-23583066 FAX: 04-23583077
TEL: 04-25663606 FAX: 04-25681778
TEL: 03-5837580-1 FAX: 03-5837582
TEL: 06-5897188-9 FAX: 06-5897218
網址：www.supertung.com.tw

My list of favourites

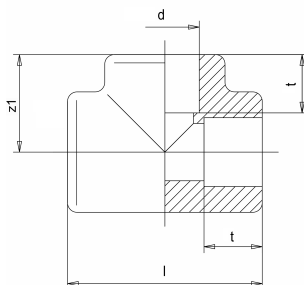
Your personal list of favourites (pinboard) contains the following products:



Pressure pipes

Material	SDR	d (mm)	e (mm)	Weight (kg/m)	Length (m)	Product no.	Quantity
PP-H	11	10	1.8	0.046	5	010000716	
PP-H	11	12	1.8	0.057	5	010000717	
PP-H	11	16	1.8	0.080	5	010013652	
PP-H	11	20	1.9	0.107	5	010000720	
PP-H	11	25	2.3	0.164	5	010000722	
PP-H	11	32	2.9	0.260	5	010000724	
PP-H	11	40	3.7	0.412	5	010000726	
PP-H	11	50	4.6	0.638	5	010000730	
PP-H	11	63	5.8	1.010	5	010000733	
PP-H	11	75	6.8	1.400	5	010000736	
PP-H	11	90	8.2	2.030	5	010000740	
PP-H	11	110	10.0	3.010	5	010000745	
PP-H	11	125	11.4	3.910	5	010000749	
PP-H	11	140	12.7	4.870	5	010000752	
PP-H	11	160	14.6	6.390	5	010000757	
PP-H	11	180	16.4	8.070	5	010000760	
PP-H	11	200	18.2	9.950	5	010000765	
PP-H	11	225	20.5	12.600	5	010000768	
PP-H	11	250	22.7	15.500	5	010000772	
PP-H	11	280	25.4	19.400	5	010000775	
PP-H	11	315	28.6	24.600	5	010000780	
PP-H	11	355	32.2	31.200	5	010000784	
PP-H	11	400	36.3	39.600	5	010000789	
PP-H	11	450	40.9	50.100	5	010003083	
PP-H	11	500	45.4	61.800	5	010000796	

PP Tees, injected, for socket welding



Product details:

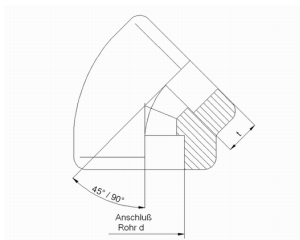
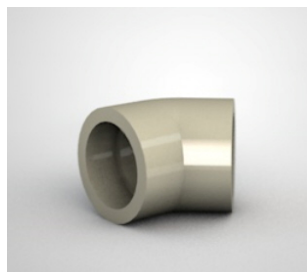
- grey - RAL 7032
- injected, for socket welding
- DIN EN ISO 15494/C

Product image for illustration purposes only.

d (mm)	z1 (mm)	t (mm)	PN (bar)	Length (mm)	kg/piece	Art. No.
20	25.5	14.5	12.5	51	0.029	020500015
25	29.5	16	12.5	59	0.041	020500016
32	35	18	12.5	70	0.061	020500017
40	41.5	20.5	12.5	83	0.108	020500018
50	49.5	23.5	12.5	99	0.160	020500019
63	60	27.5	12.5	120	0.295	020500020
75	69.5	31	12.5	139	0.355	020500021
90	81.5	35.5	12.5	163	0.630	020500022
110	97.5	41.5	12.5	195	1.030	020500023

All information provided in respect of technical data shall be considered non-binding. This information does not constitute a guarantee of specific properties or qualities and shall not be construed as a warranty in regard to product condition, durability or service life. Subject to modifications and errors. Our standard terms and conditions apply. For further information, please contact our applications engineering team: pipingsystems@simona.de.

PP Elbows 90°, injected, for socket welding



Product details:

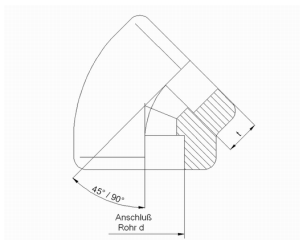
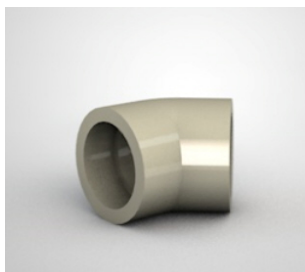
- grey - RAL 7032
- injected, for socket welding
- DIN EN ISO 15494/C

Product image for illustration purposes only.

d (mm)	t (mm)	PN (bar)	Angle (°)	kg/piece	Art. No.
20	14.5	12.5	90	0.020	010200083
25	16	12.5	90	0.028	010200084
32	18	12.5	90	0.046	010200085
40	20.5	12.5	90	0.082	010200086
50	23.5	12.5	90	0.126	010200087
63	27.5	12.5	90	0.178	010200088
75	31	12.5	90	0.270	010200089
90	35.5	12.5	90	0.480	010200090
110	41.5	12.5	90	0.855	010200091

All information provided in respect of technical data shall be considered non-binding. This information does not constitute a guarantee of specific properties or qualities and shall not be construed as a warranty in regard to product condition, durability or service life. Subject to modifications and errors. Our standard terms and conditions apply. For further information, please contact our applications engineering team: pipingsystems@simona.de.

PP Elbows 45°, injected, for socket welding



Product details:

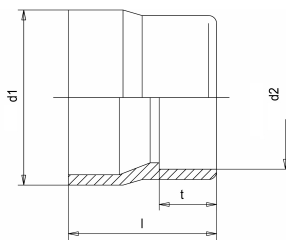
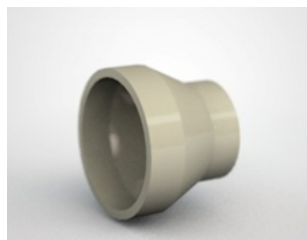
- grey - RAL 7032
- injected, for socket welding
- DIN EN ISO 15494/C

Product image for illustration purposes only.

d (mm)	t (mm)	PN (bar)	Angle (°)	kg/piece	Art. No.
20	14.5	12.5	45	0.018	010200092
25	16	12.5	45	0.025	010200093
32	18	12.5	45	0.036	010200094
40	20.5	12.5	45	0.071	010200095
50	23.5	12.5	45	0.103	010200096
63	27.5	12.5	45	0.148	010200097
75	31	12.5	45	0.200	010200098
90	35.5	12.5	45	0.335	010200099
110	41.5	12.5	45	0.610	010200100

All information provided in respect of technical data shall be considered non-binding. This information does not constitute a guarantee of specific properties or qualities and shall not be construed as a warranty in regard to product condition, durability or service life. Subject to modifications and errors. Our standard terms and conditions apply. For further information, please contact our applications engineering team: pipingsystems@simona.de.

PP Reducers concentric



Product details:

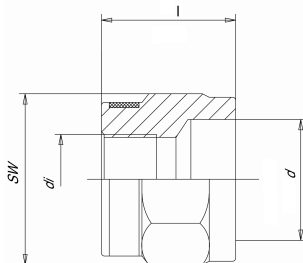
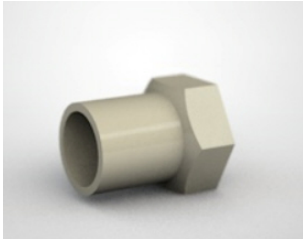
- grey - RAL 7032
- injected, for socket welding
- DIN EN ISO 15494/C

Product image for illustration purposes only.

d1 (mm)	d2 (mm)	L (mm)	t (mm)	PN (bar)	kg/piece	Art. No.
25	20	31	14.5	12.5	0.010	014900394
32	20	43	14	12.5	0.017	014900991
32	25	37	16	12.5	0.017	014900395
40	20	48	14	12.5	0.022	014900992
40	25	44	16	12.5	0.024	014900396
40	32	44	18	12.5	0.030	014900397
50	20	54	14	12.5	0.036	014900993
50	32	52.5	18	12.5	0.035	014900398
50	40	52.5	20.5	12.5	0.051	014900399
63	25	64	16	12.5	0.060	014900995
63	32	63.5	18	12.5	0.057	014900400
63	40	63.5	20.5	12.5	0.070	014900996
63	50	63.5	23.5	12.5	0.086	014900401
75	63	61.6	27	12.5	0.106	014900402
90	63	83.5	27	12.5	0.171	014900403
90	75	83.5	31	12.5	0.150	014900404
110	90	100.5	35.5	12.5	0.260	014900405

All information provided in respect of technical data shall be considered non-binding. This information does not constitute a guarantee of specific properties or qualities and shall not be construed as a warranty in regard to product condition, durability or service life. Subject to modifications and errors. Our standard terms and conditions apply. For further information, please contact our applications engineering team: pipingsystems@simona.de.

PP Adaptors with threaded female end Rp



Product image for illustration purposes only.

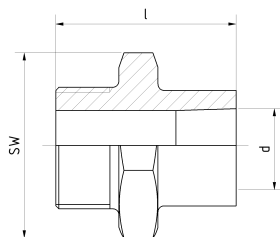
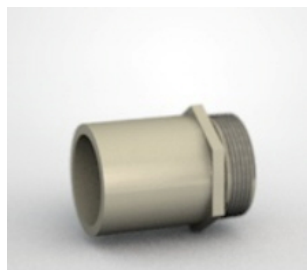
Product details:

- grey - RAL 7032
- injected, for socket welding
- with cylindric threaded female end Rp (acc. to DIN EN 10226/1), max. admissable operating overpressure for water at +20°C 8 bar, with reinforcement-ring made of galvanised steel, double-layer PTFE tape recommended as sealant, execution with NPT-thread: use of PP Adaptors NPT (see page 76) and PP Sockets (see page 84)
- DIN EN ISO 15494/C

d (mm)	RP (")	PN (bar)	SW (mm)	Length (mm)	kg/piece	Art. No.
20	1/2	8	32	35	0.018	014000026
25	3/4	8	36	39	0.025	014000027
32	1	8	46	45	0.034	014000028
40	1 1/4	8	55	53	0.064	014000037
50	1 1/2	8	65	54	0.100	014000036
63	2	8	80	62	0.145	014000041

All information provided in respect of technical data shall be considered non-binding. This information does not constitute a guarantee of specific properties or qualities and shall not be construed as a warranty in regard to product condition, durability or service life. Subject to modifications and errors. Our standard terms and conditions apply. For further information, please contact our applications engineering team: pipingsystems@simona.de.

PP Adaptors with threaded male end R



Product details:

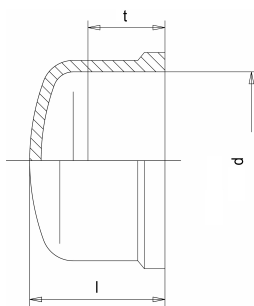
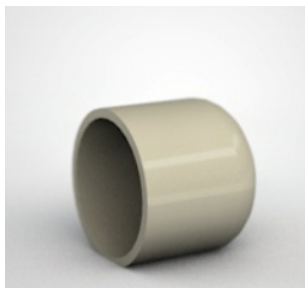
- grey - RAL 7032
- injected, for socket welding
- with conical threaded male end R (acc. to DIN EN 10226/1), max. admissible operating overpressure for water at +20 °C 8 bar, double-layer PTFE tape recommended as sealant, execution with NPT-thread: Use of PP Adaptors NPT (see page 77) and PP Sockets (see page 84)
- DIN EN ISO 15494/C

Product image for illustration purposes only.

d (mm)	R (")	PN (bar)	SW (mm)	Length (mm)	kg/piece	Art. No.
20	1/2	8	24	58	0.012	010700030
25	3/4	8	30	46	0.017	010700035
32	1	8	36	51	0.022	010700032
40	1 1/4	8	46	56	0.041	010700058
50	1 1/2	8	55	61	0.064	010700027
63	2	8	65	69	0.100	010700059

All information provided in respect of technical data shall be considered non-binding. This information does not constitute a guarantee of specific properties or qualities and shall not be construed as a warranty in regard to product condition, durability or service life. Subject to modifications and errors. Our standard terms and conditions apply. For further information, please contact our applications engineering team: pipingsystems@simona.de.

PP End caps for socket welding



Product details:

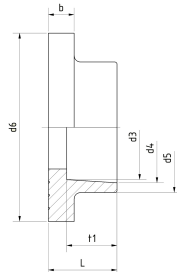
- grey - RAL 7032
- injected, for socket welding
- DIN EN ISO 15494/C

Product image for illustration purposes only.

d (mm)	t (mm)	PN (bar)	Length (mm)	kg/piece	Art. No.
20	14.5	12.5	22.5	0.010	020600006
25	16	12.5	27	0.015	020600007
32	18	12.5	31	0.024	020600008
40	20.5	12.5	36	0.037	020600026
50	23.5	12.5	43	0.061	020600009
63	27.5	12.5	52	0.086	020600010
75	31	12.5	59	0.136	020600027
90	35.5	12.5	69	0.235	020600011
110	41.5	12.5	82	0.405	020600012

All information provided in respect of technical data shall be considered non-binding. This information does not constitute a guarantee of specific properties or qualities and shall not be construed as a warranty in regard to product condition, durability or service life. Subject to modifications and errors. Our standard terms and conditions apply. For further information, please contact our applications engineering team: pipingsystems@simona.de.

PP Stub flanges for socket welding for loose flange ISO/DIN



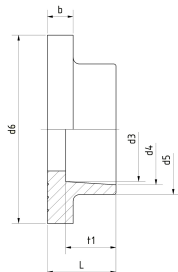
Product details:

- grey - RAL 7032
- injected, for socket welding, serrated flange face
- DIN EN ISO 15494/C

d (mm)	d5 (mm)	d6 (mm)	b (mm)	t (mm)	PN (bar)	Material	kg/piece	Art. No.
20	27	45	10	14.5	12.5	PP-H	0.016	015600043
25	33	58	10	16	12.5	PP-H	0.028	015600044
32	41	68	10	18.1	12.5	PP-H	0.036	015600024
40	50	78	11	20.5	12.5	PP-H	0.050	015600045
50	61	88	12	23.5	12.5	PP-H	0.064	015600046
63	76	102	14	27.4	12.5	PP-H	0.098	015600025
75	90	106	10	31	12.5	PP-R	0.091	015600017
90	109	125	11	35.5	12.5	PP-R	0.162	015600018
110	131	150	12	41.5	12.5	PP-R	0.255	015600019

All information provided in respect of technical data shall be considered non-binding. This information does not constitute a guarantee of specific properties or qualities and shall not be construed as a warranty in regard to product condition, durability or service life. Subject to modifications and errors. Our standard terms and conditions apply. For further information, please contact our applications engineering team: pipingsystems@simona.de.

PP Stub flanges for socket welding for loose flange ANSI



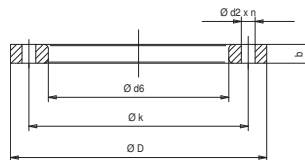
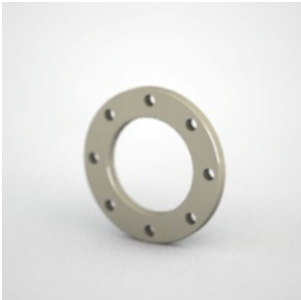
Product details:

- grey - RAL 7032
- injected, for socket welding, serrated flange face
- DIN EN ISO 15494/C

d (mm)	DN (mm)	d5 (mm)	d6 (mm)	d in Zoll	b (mm)	t (mm)	PN (bar)	Material	kg/piece	Art. No.
20	15	26	44	1	10	14.5	12.5	PP-H	0.014	015600102
25	20	32	54	3	10	16	12.5	PP-H	0.023	015600103
32	25	39	63	1	10	18	12.5	PP-H	0.029	015600060
40	32	48	73	1	11	20.5	12.5	PP-H	0.042	015600101
50	40	60	82.5	2	12	23.5	12.5	PP-H	0.059	015600104
63	50	72	101	2	14	27.5	12.5	PP-H	0.092	015600105
75	65	85	106	2	10	31	12.5	PP-R	0.080	015600052
90	80	106	125	3	11	35.5	12.5	PP-R	0.152	015600053
110	100	124	150	4	12	41.5	12.5	PP-R	0.215	015600023

All information provided in respect of technical data shall be considered non-binding. This information does not constitute a guarantee of specific properties or qualities and shall not be construed as a warranty in regard to product condition, durability or service life. Subject to modifications and errors. Our standard terms and conditions apply. For further information, please contact our applications engineering team: pipingsystems@simona.de.

PP/Steel Loose flanges for stub flanges for socket welding, ISO/DIN drilled



Product details:

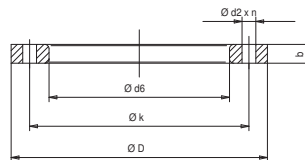
- grey/black
- For diameters 20 up to 75 ISO/DIN loose flanges for stub flanges can be used
- DIN EN ISO 15494/C

Product image for illustration purposes only.

d (mm)	DN (mm)	Load PN	d2 (mm)	d6 (mm)	D (mm)	b (mm)	k (mm)	Drilled PN	Anzahl n	M	kg/piece	Art. No.
90	80	16	18	110	200	20	160	10/16	8	M16	1.249	013000043
90	80	16	18	110	200	20	160	10/16	8	M16	1.365	013000045
110	100	16	18	133	220	20	180	10/16	8	M16	1.467	013000044
110	100	16	18	133	220	20	180	10/16	8	M16	1.462	013000046

All information provided in respect of technical data shall be considered non-binding. This information does not constitute a guarantee of specific properties or qualities and shall not be construed as a warranty in regard to product condition, durability or service life. Subject to modifications and errors. Our standard terms and conditions apply. For further information, please contact our applications engineering team: pipingsystems@simona.de.

PP/Steel Loose flanges for stub flanges for socket welding, ANSI drilled



Product details:

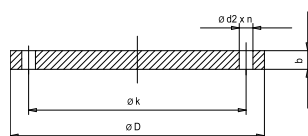
- black
- Drilled acc. to ANSI B 16,5 - 150lbs, for diameters 20 up to 75 loose flanges for stub flanges, ANSI drilled can be used

Product image for illustration purposes only.

d (mm)	DN (mm)	Load lbs	d2 (mm)	d6 (mm)	D (mm)	b (mm)	k (mm)	Anzahl n	Connection (inch)	Art. No.
90	80	150	19	107.5	190	18	152.4	8		013000410
110	100	150	18	127.5	227	18	190.5	8		013000411

All information provided in respect of technical data shall be considered non-binding. This information does not constitute a guarantee of specific properties or qualities and shall not be construed as a warranty in regard to product condition, durability or service life. Subject to modifications and errors. Our standard terms and conditions apply. For further information, please contact our applications engineering team: pipingsystems@simona.de.

PP/Steel Blind flanges, ISO/DIN drilled



Product details:

- black, grey on request
- Drilled PN 10/16 up to d 180 mm
- DIN EN ISO 15494/C, drilled PN 10, DIN EN 1092/1 (replaces ISO/DIN 2501)

Product image for illustration purposes only.

d (mm)	DN (mm)	Load PN	d2 (mm)	D (mm)	b (mm)	k (mm)	Drilled PN	Anzahl n	kg/piece	Art. No.
20	15	10	14	95	16	65	10/16	4	0.290	013100003
25	20	10	18	105	12	75	10/16	4	0.380	013100004
32	25	10	14	115	18	85	10/16	4	0.596	013100005
40	32	10	18	140	17	100	10/16	4	0.830	013100006
50	40	10	18	150	18	110	10/16	4	1.057	013100007
63	50	10	18	165	18	125	10/16	4	1.303	013100008
75	65	10	18	185	18	145	10/16	4	1.580	013100009
90	80	10	18	200	20	160	10/16	8	2.279	013100010
110	100	10	18	220	20	180	10/16	8	2.813	013100011
125	100	10	18	220	20	180	10/16	8	2.867	013100012
140	125	10	18	250	24	210	10/16	8	3.920	013100013
160	150	10	22	285	22	240	10/16	8	7.085	013100014
180	150	10	22	285	24	240	10/16	8	7.139	013100015
200	200	10	22	340	24	295	10	8	10.550	013100016
225	200	10	22	340	24	295	10	8	10.607	013100017
250	250	10	22	395	30	350	10	12	14.040	013100018
280	250	10	22	395	30	350	10	12	14.040	013100019
315	300	10	22	445	34	400	10	12	26.480	013100020
355	350	10	22	505	39	460	10	16	39.000	013100021
400	400	10	25	574	46	515	10	16	50.400	013100022

All information provided in respect of technical data shall be considered non-binding. This information does not constitute a guarantee of specific properties or qualities and shall not be construed as a warranty in regard to product condition, durability or service life. Subject to modifications and errors. Our standard terms and conditions apply. For further information, please contact our applications engineering team: pipingsystems@simona.de.